

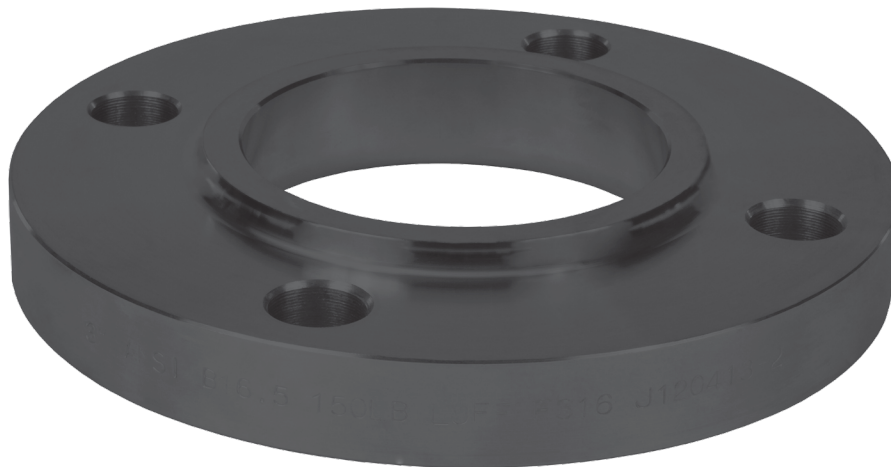


FLANGES

LAP JOINT -
FORGED 150# - CARBON STEEL

FEATURES & APPLICATIONS:

- A flange is a method of connecting pipes, valves, pumps & other equipment to form a piping system.



CARBON STEEL

FORGED 150	
ID	CARBON STEEL
1"	LPJ100
1-1/4"	LPJ125
1-1/2"	LPJ150
2"	LPJ200
2-1/2"	LPJ250
3"	LPJ300
4"	LPJ400
5"	LPJ500
6"	LPJ600
8"	LPJ800
10"	LPJ1000
12"	LPJ1200

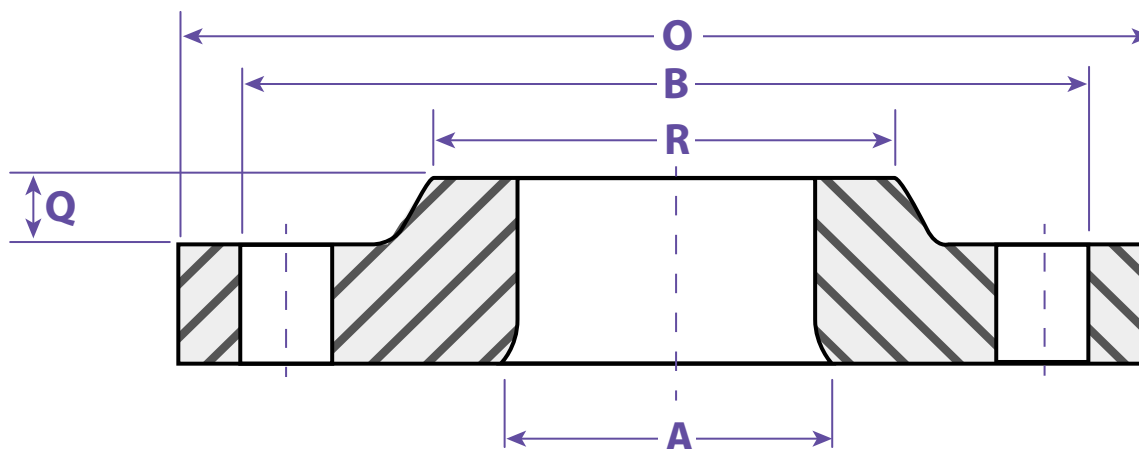


Information contained on this page is for general information purposes only. Seal Fast Inc. assumes no responsibility for errors or omissions for this product.



SEALFAST
THE SIMPLE SOLUTION

PIPE FITTINGS & VALVES



Dimensions						
Pipe Size	Overall Dim	Raised Face	Raised Face Dim	Bolt Holes # / Dim	Bolt Hole Circle	Part #
A	O	Q (1/16 thickness)	R	B		
1"	4.25	0.56	---	4-0.62	3.12	LPJ100
1-1/4"	4.62	0.62	---	4-0.62	3.50	LPJ125
1-1/2"	5.00	0.68	---	4-0.62	3.88	LPJ150
2"	6.00	0.75	---	4-0.75	4.75	LPJ200
2-1/2"	7.00	0.88	---	4-0.75	5.50	LPJ250
3"	7.50	0.94	---	4-0.75	6.00	LPJ300
4"	9.00	0.94	---	8-0.75	7.50	LPJ400
5"	10.00	0.94	---	8-0.88	8.50	LPJ500
6"	11.00	1.00	---	8-0.88	9.50	LPJ600
8"	13.50	1.12	---	8-0.88	11.75	LPJ800
10"	16.00	1.19	---	12-1.00	14.25	LPJ1000
12"	19.00	1.25	---	12-1.00	17.00	LPJ1200

TITLE FLANGES - LAP JOINT / FORGED 150#

DISCLAIMER

All drawings and specifications are subject to change without notice. Drawings represent general dimensions of our products. Seal Fast cannot guarantee the dimensions of the part will exactly match those in the drawing. This drawing is the property of Seal Fast Inc. Copying or reproduction of this drawing is expressly prohibited.

MATERIAL

Carbon Steel

DRAWING NOT TO SCALE

PART

LPJ...



SEALFAST
THE SIMPLE SOLUTION